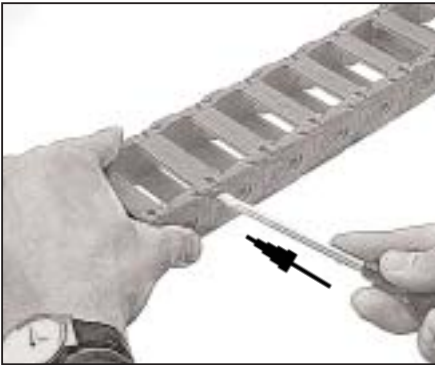
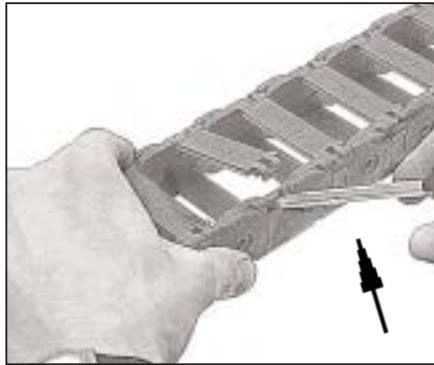


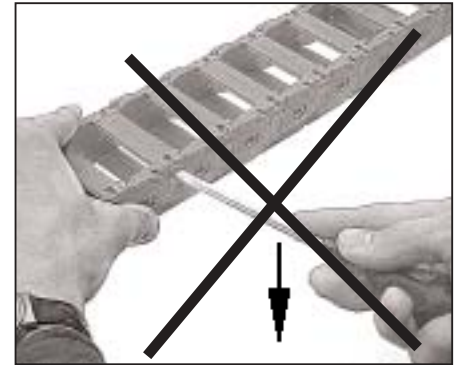
**Opening of the Stay Bars and Covers**



From the side insert a screwdriver under the stay bar at the separation point...

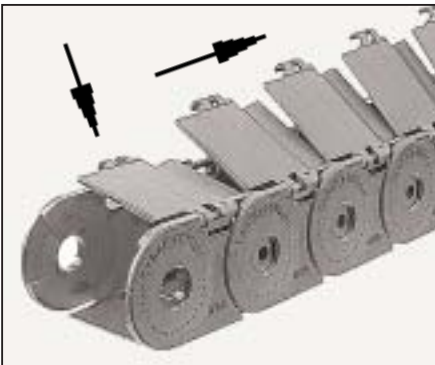


... and lever in the direction of the arrow



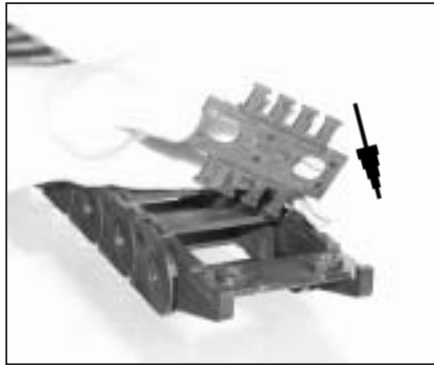
Do not lever downwards

**Fitting of Inner Covers**

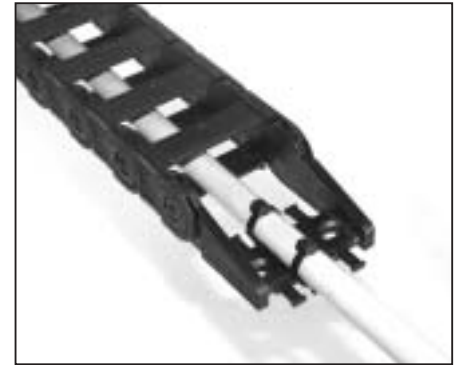


Always close the covers in the direction indicated. Overlapping as with outer covers

**Using the Detachable Strain Relief Device**



Attach the strain relief device to the connecting bracket



Correct strain relief of an electric cable

**Removal of Connecting Bracket**

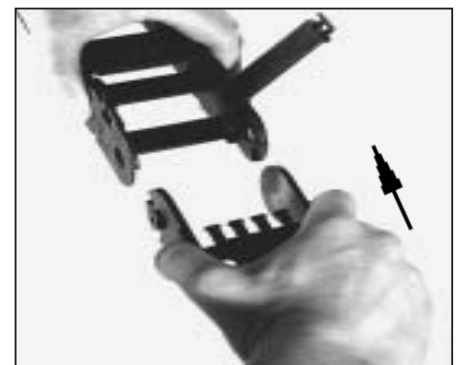


Open the stay bars and release the pin using a screwdriver



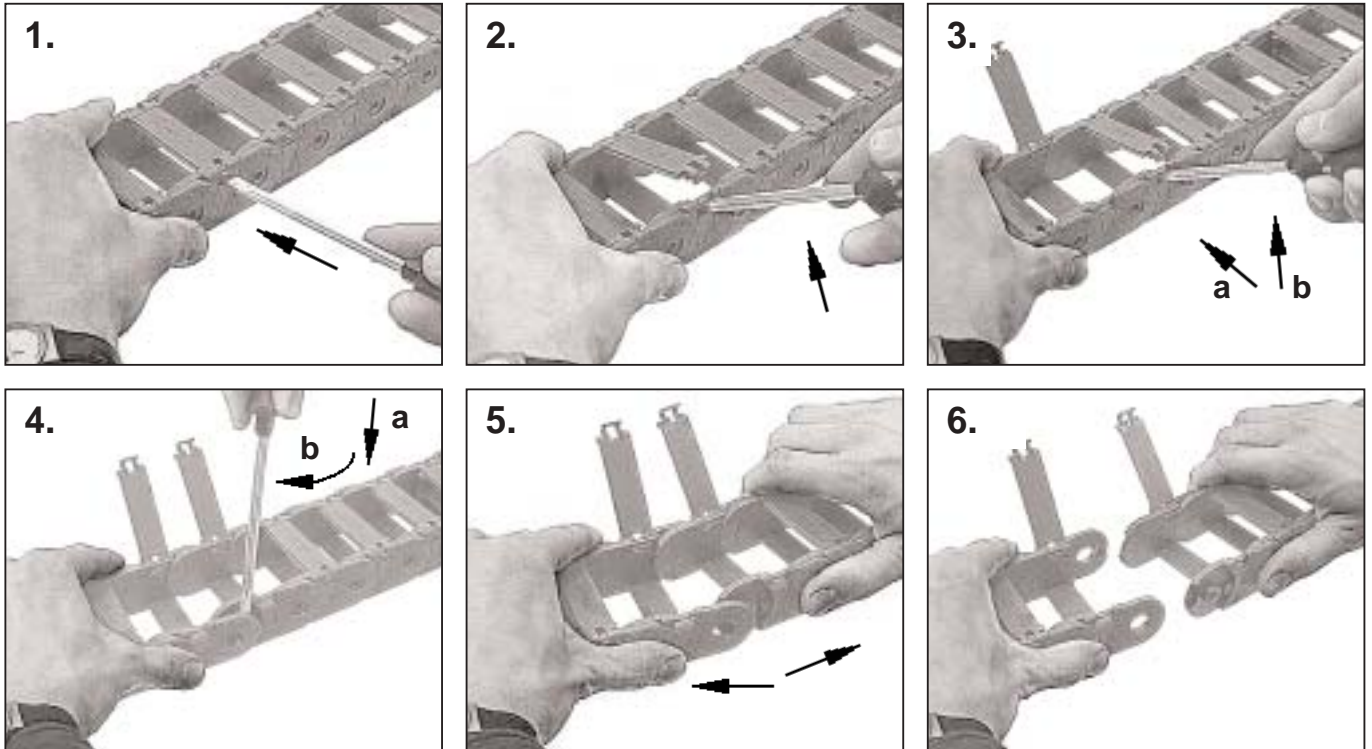
Release the connecting bracket by moving from side to side

**Fitting**



Fit the connecting bracket in the desired position

**Fitting to Length**



**Longthoning**

